



3560 South Main Street, Salt Lake City, UT 84115

Phone: (801) 287-9200 • (800) 854-6951 Fax: (801) 287-9203

order online www.dennisuniform.com

National Customer Service 800.854.6951

WELCOME TO DENNIS

We look forward to working with you this year! Since 1920, DENNIS has sewn the best uniforms available in our Portland, Oregon factory. We are a family-owned business committed to quality, customer service, and education. Our goal is to have every student in uniform by the first day of school. If you need any help, please do not hesitate to contact our National Customer Service Department 800.854.6951.

EASY WAYS TO SHOP

- ◆ Store, online, phone/fax/mail order.
- ◆ DENNIS accepts Visa, Mastercard, Discover & checks in US Dollars.
- ◆ Call National Customer Service for custom garments.

ORDER ONLINE

- ◆ www.dennisuniform.com
- ◆ Enter school code: **R2S**

NATIONAL CUSTOMER SERVICE

800.854.6951 fax 877.291.5480

Hours: Monday-Friday 8am-5pm PST

Extended summer hours

RETURNS & EXCHANGES

DENNIS guarantees the quality of workmanship and fabrics on all garments.

Merchandise will be accepted for return or exchange within 60 days.

Merchandise must be accompanied by sales receipt, be unworn, unwashed, and unaltered, with tags intact.

There are no returns or exchanges on custom items.

Returns / exchanges / defective garments accepted at any branch store, or by mailing to:

DENNIS Uniform, 135 SE Hawthorne Blvd,
Portland, Oregon 97214

National Customer Service 800.854.6951

UNIFORM PRICING EFFECTIVE MAY 1, 2012

SALT LAKE CITY STORE

801.287.9200 fax 801.287.9203

REGULAR STORE HOURS

Tue 10am – 6pm

Wed-Fri 12pm – 5pm

Sat 10am – 2pm

Labor Day 10am – 2pm

EXTENDED SUMMER HOURS

Aug 1-Sep 1

Mon-Tue 10am – 6pm

Wed-Fri 12pm – 6pm

Sat 10am – 2pm

DENNIS stores are closed on major holidays and from Christmas to New Year's Day.

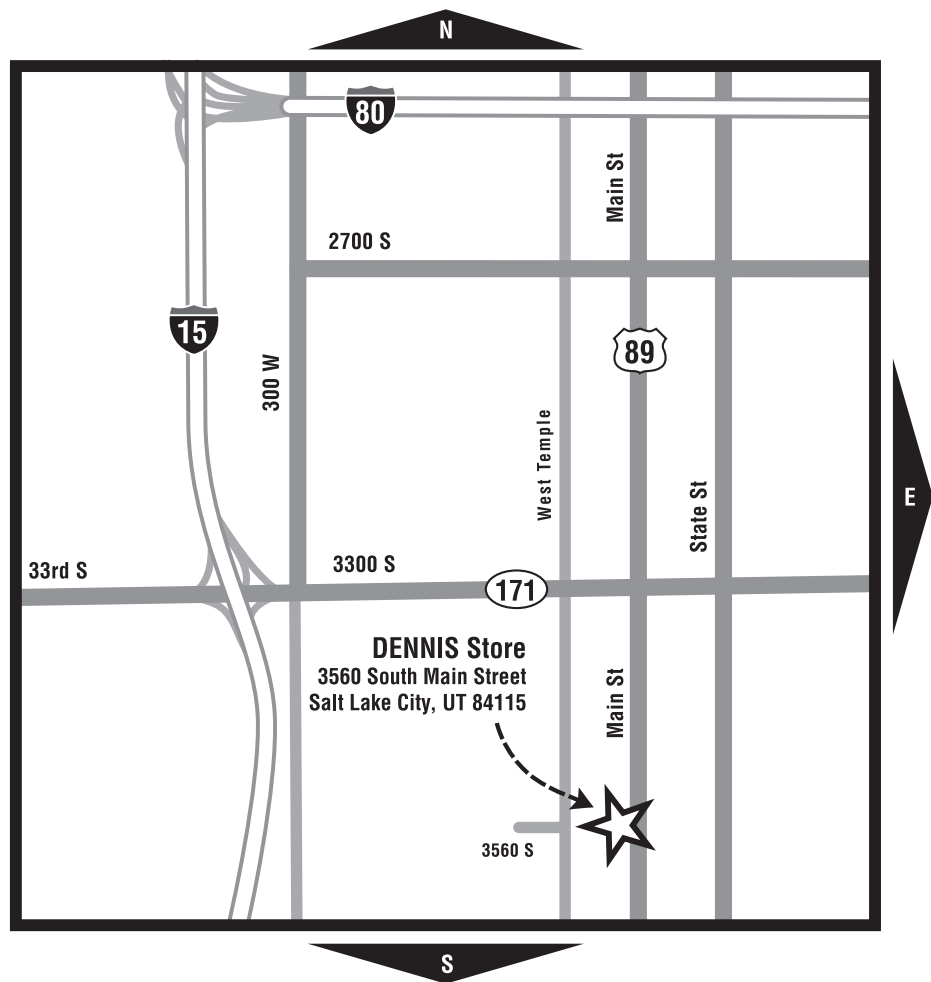
DIRECTIONS

From I-15, take the 33rd South exit. Head east, staying in the right lane. Turn south on Main St. DENNIS is located on the west side of the street.

From I-80, take State St exit. Head south on State St to 33rd South and turn west. Turn south on Main St. DENNIS is located on the west side of the street.

DENNIScrip, Gift Scrip & AFP Vouchers

- DENNIScrip may be used at DENNIS locations, in-school sale events, and mail order. Excludes online and phone.
- Maximum change made is \$5.
- DENNIScrip is not returnable or refundable for dollars
- DENNIScrip is good forever!



DENNIS PROMOTIONS CALENDAR for 2012 and 2013

January 2012 · New Year's Savings

10% savings on all purchases & orders. . . phone, mail, internet and in-store.

June 10-July 10, 2012 · Early Bird Savings

10% savings on all purchases & orders. . . phone, mail, internet and in-store.

October 2012 through May 2013 · DENNIS Advantage Card Savings

Earn fifteen \$10 stamps on your DENNIS advantage card and save \$10 on your next in-store only purchase.

January 2013 · New Year's Savings

10% savings on all purchases & orders. . . phone, mail, internet and in-store.

March 2013 · Double Punch Month

Earn 2 stamps for every \$10 purchase on your DENNIS Advantage Card in-store purchase only.

March 2013 · Internet Special

Free shipping on all orders. . . phone, mail and internet.

June 10-July 10, 2013 · Early Bird Savings

10% savings on all purchases & orders. . . phone, mail, internet and in-store.

October 2013 through May 2014 DENNIS Advantage Card Savings

Earn fifteen \$10 stamps on your DENNIS advantage card and save \$10 on your next in-store only purchase.

OUR LADY OF LOURDES SCHOOL

School Code: R2S

1065 East 700 South; Salt Lake City, UT 84102

Girls, grades: K-5 JUMPERS



Girls 3-20	\$46.75
Girls 6½-16½	\$47.75

Item #: 081630-201

Christopher Plaid- Box pleat w/knife pleats (225)

Girls, grades: 6-8 SKIRTS



Girls 3-20	\$44.50
Girls 6½-16½	\$45.50
Juniors 1-19	\$45.50
Juniors 21-25	\$45.50

Item #: 008680-201

Christopher Plaid-Center box pleat (225)

Girls, grades: K-7 SKORTS



Girls 3-20	\$29.50
Girls 6½-16½	\$31.50
Juniors 1-19	\$31.50
Juniors 21-25	\$31.50

Item #: 035210-965

Skort-Navy Twill w/Tabs (069)

Girls, grades: K-8 SKORTS



Girls 3-20	\$46.00
Girls 6½-16½	\$52.00
Juniors 1-19	\$52.00
Juniors 21-25	\$52.00

Item #: 035210-201

Christopher Plaid w/Tabs (225)

Optional

Girls, grades: 8 SKORTS



Girls 3-20	\$29.50
Girls 6½-16½	\$31.50
Juniors 1-19	\$31.50
Juniors 21-25	\$31.50

Item #: 035210-R5S

Skort-Khaki Twill w/Tabs w/Dennis Joker tag (068)

Must meet Judge standards -skort must be no shorter than 4 inches above the middle of the knee.

Girls, grades: K-5 BLOUSES



Youth 4-16	\$17.25
Adult S-3XL	\$18.25

Item #: 00080A-911

White BC S/S-Peter Pan Collar (119)

Girls, grades: K-5 BLOUSES



Youth 4-16	\$19.50
Adult S-3XL	\$20.50

Item #: 00080C-911

White BC L/S-Peter Pan Collar (119)

Girls, grades: K-7 PANTS

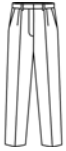


Reg 3-6X	\$26.00
Reg 7-20	\$28.00
Juniors 1-19	\$32.00
Juniors 21-25	\$32.00

Item #: 040300-965

Girls Navy Twill-Flat Frt (069)

Optional

Girls, grades: K-7 PANTS

Reg 3-6X or Slim 3-6	\$25.00
Reg 7-20 or Slim 7-16	\$27.00
Girls 6½-16½	\$27.00
Juniors 1-19	\$3.00
Juniors 21-25	\$3.00

Item #: 040400-919

Girls Navy 14 Wale Cord-Plt frt (067)

Optional; Junior sizes while supplies last

Girls, grades: 8 PANTS

Reg 7-20	\$28.00
Juniors 1-19	\$32.00
Juniors 21-25	\$32.00

Item #: 040300-965

Girls Khaki Twill-Flat Frt (068)

Girls, grades: K-7 PANTS

Reg 3-6X or Slim 3-6	\$24.50
Reg 7-20 or Slim 7-16	\$26.50
Girls 22-24	\$26.50
Girls 6½-16½	\$26.50
Juniors 1-19	\$30.75

Item #: 040400-965

Girls Navy Twill-Plt Frt (069)

Optional

Girls, grades: 8 PANTS

Reg 7-20 or Slim 7-16	\$26.50
Girls 6½-16½	\$26.50
Juniors 1-19	\$30.75
Juniors 21-25	\$30.75

Item #: 040400-965

Girls Khaki Twill-Plt Frt (068)

Girls, grades: K-7 WALK SHORTS

Girls 3-6X	\$20.00
Girls 7-20	\$22.50
Girls 22-24	\$22.50
Girls 6½-16½	\$23.50
Juniors 1-19	\$27.50

Item #: 040500-965

Girls Navy Twill 60C/40P-Plt Frt (069)

Girls, grades: K-7 WALK SHORTS

Girls 3-6X	\$20.00
Girls 7-20	\$22.50
Juniors 1-19	\$27.50
Juniors 21-25	\$27.50

Item #: 040520-965

Girls Navy Twill- Flat Front 60C/40P (069)

Girls, grades: 8 WALK SHORTS

Girls 3-6X	\$21.00
Girls 7-20	\$23.50
Girls 6½-18½	\$24.50
Juniors 1-19	\$27.50
Juniors 21-25	\$27.50

Item #: 040320-R5S

Khaki Knee Length FF Stretch - 81C/18P/1S
w/Dennis Joker (068)

no shorter than 4 inches above the knee - Judge standards

Girls, grades: 8 WALK SHORTS

Girls 4-20	\$21.00
Juniors 1-19	\$26.00

Item #: 040580-986

Girls Knee Length FF-Khaki 55R/45C (049)

Must meet Judge Memorial standards - no shorter than 4 inches above the knee.

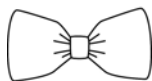
Girls, grades: K-8 ACCESSORIES

One size

\$5.50

Item #: 004880-201

Padded Headband-Christopher Plaid (225)

Girls, grades: K-8 ACCESSORIES

One size

\$4.50

Item #: 005070-201

Hairbow-Christopher Plaid (225)

Girls, grades: K-8 ACCESSORIES

One size

\$5.50

Item #: 005090-201

Scrunchy-Christopher Plaid (225)

Girls, grades: K-8 ACCESSORIES

Youth XS-XL

\$11.50

Adult S-XL

\$14.75

Item #: 035340-909

Bike Shorts-Black (007)

Bike Shorts-Dk Navy (025)

Girls & Boys, grades: K-8 POLO

Youth 2XS-XL

\$20.50

Adult S-3XL

\$22.50

Item #: 08700A-R3S

Navy Pique S/S w/Our Lady of Lourdes fiberlok (067)

While supplies last

Girls & Boys, grades: K-8 POLO

Youth 2XS-XL

\$20.50

Adult S-3XL

\$22.50

Item #: 08700A-R3S

White Pique S/S w/Our Lady of Lourdes fiberlok (119)

Dk Green Pique S/S w/Our Lady of Lourdes fiberlok (136)

Girls & Boys, grades: K-8 POLO

Youth 2XS-XL

\$22.50

Adult S-3XL

\$24.50

Item #: 08700C-R3S

Navy Pique L/S w/Our Lady of Lourdes fiberlok (067)

While supplies last

Girls & Boys, grades: K-8 POLO

Youth 2XS-XL

\$22.50

Adult S-3XL

\$24.50

Item #: 08700C-R3S

White Pique L/S w/Our Lady of Lourdes fiberlok (119)

Dk Green Pique L/S w/Our Lady of Lourdes fiberlok (136)

Girls & Boys, grades: K-8 CARDIGAN

Youth 2XS-XL	\$39.00
Adult S-XL	\$43.50
Adult 2XL-3XL	\$49.75

Item #: 063000-R2S

Navy V-Neck w/OLO Lourdes embroidery (067)

Sweater is not **REQUIRED**, however if a sweater is desired, it must be an OLOL logo sweater from Dennis Uniform

Girls & Boys, grades: K-8 SWEATER VEST

Youth 2XS-XL	\$30.50
Adult S-XL	\$33.50
Adult 2XL-3XL	\$40.00

Item #: 066000-R2S

Navy V-Neck w/OLO Lourdes embroidery (067)

Vest required item with blouses and oxfords, when worn with pants, skirts, skorts

Girls & Boys, grades: K-8 SWEATSHIRT 9oz

Youth 3XS-XL	\$25.00
Adult S-3XL	\$28.00

Item #: 090000-R2S

Navy Crew Neck w/OLO Lourdes embroidery (067)

Girls & Boys, grades: K-8 SWEATSHIRT 9oz

Youth 3XS-XL	\$25.00
Adult S-3XL	\$28.00

Item #: 090000-R4S

Dk Green Crew Neck w/OLO Lourdes embroidery (136)

Girls & Boys, grades: K-8 SWEATSHIRT

Youth 2XS-XL	\$27.00
Adult S-3XL	\$31.00

Item #: 093000-R2S

Sweatshirt 1/4 Zip - Navy w/OLO Lourdes embroidery (067)

Girls & Boys, grades: K-8 SWEATSHIRT

Youth 2XS-XL	\$27.00
Adult S-3XL	\$31.00

Item #: 093000-R4S

Sweatshirt 1/4 Zip - Dk Green w/OLO Lourdes embroidery (136)

Girls & Boys, grades: 5-8 GYM WEAR

Youth XS-XL	\$17.00
Adult S-3XL	\$19.00

Item #: 005800-R3S

Shorts Nylon Mini Mesh-Navy w/Our Lady of Lourdes fiberl (067)

Required

Girls & Boys, grades: 6-8 GYM WEAR

Youth XS-XL	\$11.50
Adult S-3XL	\$12.50

Item #: 053800-R3S

T-Shirt 100C-Dk Green w/Our Lady of Lourdes fiberlok (136)

Required

Girls & Boys, grades: K-8 FLEECE VEST

Youth 2XS-XL	\$39.50
Adult S-3XL	\$49.50

Item #: 052100-R2S

Navy Fleece w/OLO Lourdes embroidery (067)

Girls & Boys, grades: K-12 FLEECE VEST

Youth 2XS-XL	\$30.00
Adult S-2XL	\$39.00
Adult S-3XL	\$39.00

Item #: 054100-R3S

Forest Green Microfleece Vest-front zipper w/OLO Lourde (035)

Navy Microfleece Vest-front zipper w/OLO Lourdes fiberl (067)

Girls & Boys, grades: K-8 FLEECE JACKET

Youth 2XS-XL	\$49.00
Adult S-3XL	\$59.00

Item #: 052000-R2S

Navy Fleece w/OLO Lourdes embroidery (067)

Girls & Boys, grades: K-8 FLEECE JACKET

Youth 2XS-XL	\$39.00
Adult S-2XL	\$49.00

Item #: 054000-R3S

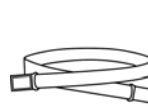
Forest Green Microfleece Jacket-front zipper w/OLO Lourd (035)

Girls & Boys, grades: K-12 FLEECE JACKET

Youth 2XS-XL	\$39.00
Adult S-3XL	\$49.00

Item #: 054000-R3S

Navy Microfleece Jacket-front zipper w/OLO Lourdes fiber (067)

Girls & Boys, grades: K-2 ACCESSORIES

One size	\$6.50
----------	--------

Item #: 014150-900

Belt Stretch w/Magnetic Closure-Navy (067)

A belt is required with pants and shorts

Girls & Boys, grades: K-8 ACCESSORIES

One size	\$9.00
----------	--------

Item #: 01411B-900

Belt Stretch/Brown Strap-Navy (067)

A belt is required with pants and shorts

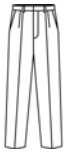
Girls & Boys, grades: K-8 ACCESSORIES

Sizes 20-28	\$10.00
Sizes 30-48	\$10.50

Item #: 041300-900

Belt Leather-Black (007)

A belt is required with pants and shorts

Boys, grades: K-7 PANTS

Reg 3-7 or Slim 3-7	\$23.50
Reg 8-16 or Slim 8-16	\$26.75
Husky 25-38	\$31.75
Prep 26-32	\$30.75
Mens 33-44	\$32.75

Item #: 070000-964

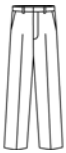
Boys Navy Rassler Twill-Plt Frt-DENNIS Durables (067)

Boys, grades: K-7 PANTS

Reg 3-7 or Slim 3-7	\$26.50
Reg 8-16 or Slim 8-16	\$30.50
Husky 25-38	\$36.00
Prep 27-32	\$33.00
Mens 33-44	\$37.00

Item #: 072000-919

Navy 14 Wale Cord-Plain Frt-DENNIS Durables (067)
Optional

Boys, grades: K-7 PANTS

Reg 3-7 or Slim 3-7	\$23.50
Reg 8-16 or Slim 8-16	\$26.75
Husky 25-38	\$31.75
Prep 27-32	\$30.75
Mens 33-48	\$32.75

Item #: 075500-964

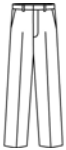
Boys Navy Twill-Rlxd Fit 65P/35C-Flat Frt (067)

Boys, grades: 8 PANTS

Reg 8-16 or Slim 8-16	\$26.75
Husky 25-38	\$31.75
Prep 26-32	\$30.75
Mens 33-44	\$32.75

Item #: 070000-964

Boys Khaki Rassler Twill-Plt Frt-DENNIS Durables (049)

Boys, grades: 8 PANTS

Reg 8-16 or Slim 8-16	\$26.75
Husky 25-38	\$31.75
Prep 27-32	\$30.75
Mens 33-48	\$32.75

Item #: 075500-964

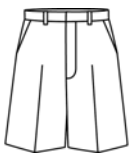
Boys Khaki Twill-Rlxd Fit 65P/35C-Flat Frt (049)

Boys, grades: K-7 WALK SHORTS

Reg 3-7 or Slim 3-7	\$20.50
Reg 8-16 or Slim 8-16	\$24.00
Husky 26-38	\$28.50
Prep 26-32	\$28.50
Mens 33-44	\$29.00

Item #: 040600-964

Boys Navy Rassler Twill Pltd Frt (067)

Boys, grades: K-7 WALK SHORTS

Reg 3-7 or Slim 3-7	\$20.50
Reg 8-16 or Slim 8-16	\$24.00
Husky 26-38	\$28.50
Prep 27-32	\$28.50
Mens 33-48	\$29.00

Item #: 040620-964

Boys Navy Twill Flat Front (067)

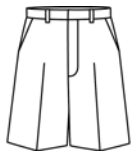
Boys, grades: 8 WALK SHORTS

Reg 8-16 or Slim 8-16	\$24.00
Husky 26-38	\$28.50
Prep 26-32	\$28.50
Mens 33-44	\$29.00

Item #: 040600-964

Boys Khaki Rassler Twill Pltd Frt (049)

Boys, grades: 8 WALK SHORTS



Reg 8-16 or Slim 8-16	\$24.00
Husky 26-38	\$28.50
Prep 27-32	\$28.50
Mens 33-48	\$29.00

Item #: 040620-964

Boys Khaki Twill Flat Front (049)

**ALL BLOUSES/SHIRTS MUST BE WORN WITH LOGO ITEM:
SWEATER, SWEATSHIRT, VEST WITH THE EXCEPTION OF
THE JUMPER**

31-Jan-12

School Code: R2S

0.0685

Girls' Jumpers, Skirts & Skorts, Pants & Walk shorts

students' body measurements

size	chest	waist	hip	skirt length	length by style				
					3521 skort length*	ankle-length skirt	walk shorts length	4040 pants inseam	4030 flat-front pants inseam
G3	23	21	24	11	10.25	—	10.25	15.25	19.25
G4	24	22	25	12	10.75	—	11	16.75	20.25
G5	24.5	22.5	26	13	11.5	—	11.75	18.5	21.25
G6	25	23	26.5	14	12	—	12.5	20.25	22.25
G6x		23.5	27		12.75	—	13.25	22	23.25
G7	26	23.5	27.5	15	14.75	28.5	14	24	24
G8	27	24	28.5	16	15.25	29.5	14.75	25.5	25.5
G10	29	25	30.5	17	15.75	30.5	15.5	26.5	27.75
G12	30.5	26	33	18	16.5	31.5	16.5	27	28.25
G14	32	27	35	19	17	32.5	17.5	27.75	29
G16	34	28	37	20	17.75	33.5	18.25	28	29.25
G18	36	29	39	20	18.5	33.5	19	28	29.25
G20	38	30	41	20	18.75	33.5	19.25	28	29.25
Half (plus) sizes									
H6.5	27	25	28.5	14	12.75	—	12.5	20.25	—
H8.5	29	26	30.5	16	15.25	—	14.75	25.5	—
H10.5	31	27	32.5	17	15.75	—	15.5	26.5	—
H12.5	32.5	28	35	18	16.5	—	16.5	27	—
H14.5	34	29	37	19	17	—	17.5	27.75	—
H16.5	36	30	39	20	17.75	—	18.25	28	—

*3550 longer skort measures 3" longer

Girls' Pleat-front Pants (#4040) are available in slim sizes. Slim sizes run 2" smaller in waist and hips than regular sizes and are available in sizes S4, S5, S6, S7, S8, S10, S12, S14, S16.

Junior Skirts & Skorts

students' body measurements length by style

junior size	waist	hip	skirt length	length by style				
				3521 skort length*	ankle-length skirt	walk shorts length	4040 pants inseam	4030 flat-front pants inseam
J1	25	35.5	19	17.5	35	16.25	30.75	32.25
J3	26	36.5	19	17.75	35	16.5	30.75	32.25
J5	27	37.5	19	18	35	16.75	31	32.5
J7	28	38.5	20	18.25	35	17	31.25	32.5
J9	29	39.5	20	18.5	35	17.25	31.25	32.75
J11	30	40.5	20	18.75	35	17.5	31.25	32.75
J13	31.5	42	20	19	35	17.75	31.25	32.75
J15	33	43.5	21	19.25	35	18	31.5	33
J17	34.5	45	21	19.5	35	18.25	31.5	33
J19	36	46.5	21	19.75	35	18.5	31.75	33.25

*3550 longer skort measures 3" longer

Socks

sock size	shoe size
S	youth 7-10.5
M	youth 10.5-adult 3
L	adult 4-8
XL	adult 10-13

Youth Cable Tights

youth size	height	weight
S	41-49"	42-56#
M	49-56"	50-80#
L	52-60"	70-105#

Youth Nylon Tights

youth size	height	weight
XS	36-40"	35-50#
S	41-46"	50-65#
M	46-50"	65-80#
L	51-55"	80-96#
XL	56-60"	96-105#

Junior Nylon Tights

junior size	height	weight
S/M	5'-5'4"	85-120#
M/Tall	5'4"-5'8"	115-140#

Girls' Blouses*

size	blouse chest	butterfly/camp shirt chest only	wing collar blouse
G3	22	23	—
G4	23	24	—
G5	—	24.5	—
G6	24	25	—
G6x	—	25.5	—
G7	—	26	—
G8	25	27	—
G10	27	29	29
G12	29	30.5	30.5
G14	31	32	32
G16	33	34	34

* order the same size as jumper or skirt

Juniors' & Women's Blouses

junior size	camp shirt/wing collar blouse chest	women's size	chest blouse
J1	34	S	30-32
J3	35	M	34-36
J5	36	L	38-40
J7	37	XL	42-44
J9	38	2XL	46-48
J11	39	3XL	50-52
J13	40.5		
J15	42		
J17	43.5		
J19	45		

Girls' Polo Shirt*

size	chest	length of garment
2XS	22	16
XS	24	17
S	26	18
M	27	19.5
L	29	21
XL	31	22

Juniors' Polo Shirt*

size	chest	length
XS	35	23.5
S	37	24.5
M	39	25
L	41	26
XL	44	26.5
2XL	47	27

*garment is styled to have a trim fit

Boys' Pants & Walk shorts*

boys' size	waist	short length	pant inseam
3	21.5	12	14.5
4 slim	20	–	16
4	22	12.5	16
5 slim	20.5	–	17.5
5	22.5	13	17.5
6 slim	21	–	19.5
6	23	13.5	19.5
7 slim	21.5	–	20
7	23.5	14	20
8 slim	22	–	21.5
8	24	15	21.5
9 slim	22.5	–	23
9	24.5	–	23**
10 slim	23	–	24
10	25	16.5	24
11 slim	23.5	–	25**
11	25.5	–	25
12 slim	24	–	26.5
12	26	17.25	26.5
14 slim	25	–	28
14	27	17.75	28
16 slim	26	–	29.5
16	28	17.25	29.5

* sizes 4-10 have elastic in back waistband

** sizes 9 & 11 not available in 7900 & walkshorts

Husky/Prep Pants & Walk shorts

waist size	husky shorts* length	prep shorts length	husky pants inseam	prep pants inseam
26	14.25	19**	21.5	–
27	15.75	19	22.5	32
28	16.25	19.25	24	32
29	16.75	19.5	25.5	32
30	17.25	19.75	27	32
31	17.75	20	27.5	32
32	18.25	20.25	28.5	32
33***	18.75	20.5	29.5	36
34	19.25	20.75	29.5	36
36	19.75	21.25	30.5	36
38	–	21.75	31.5	36
40	–	22.25	–	36
42	–	22.5	–	36
44	–	22.75	–	36

* husky sizes have elastic in waistband

** twill walk shorts only

*** waist size 33" and up are 36" unhemmed

T-Shirts, Jackets & Sweatshirts

youth size	t-shirts garment size	jackets/sweatshirts garment size
XS	N/A	2-4
S	6-8	6-8
M	10-12	10-12
L	14-16	14-16
XL	N/A	18-20

adult size	garment size
S	34-36
M	38-40
L	42-44
XL	46-48

Gym Shorts & Sweatpants

youth size	gym shorts waist	sweatpants waist
S	21-22	22-24
M	23-24	24-26
L	25-26	26-28

adult size	gym shorts waist	sweatpants waist
XS	24-26	N/A
S	28-30	30-32
M	32-34	34-36
L	36-38	38-40
XL	40-42	42-44

Pull-on Pants & Shorts

youth size	waist	pants inseam
2XS	21-22	16
XS	22-23	19
S	23-24	22
M	25-26	25
L	27-28	27
XL	29-30	28

adult size	waist	pants inseam
XS	25-27	31.5
S	28-30	32
M	31-33	32.5
L	34-36	33
XL	37-39	33.5
2XL	40-42	34

Shirts

youth size	chest
4	22
6	24
8	26
10	28
12	30
14	32
16	34
18	36
20	38

adult size	neck
S	14.5
M	15.5
L	16.5
XL	17.5
2XL	18.5

Knit Shirts

youth size	chest
2XS	25
XS	27
S	29
M	32
L	36
XL	38

adult size	chest
S	38
M	42
L	46
XL	50
2XL	54
3XL	58

MEASUREMENTS

Measurements on chart are body measurements

chest/bust:	measure the fullest part
waist:	measure at the traditional waist, the narrowest part of the waist—all styles are sized based on this measurement.
hips:	stand heels together; measure fullest part
rise:	measure bottom of waistband at the back around crotch to bottom of waistband front
waist length:	measure from nape of neck to waist
inseam:	measure from crotch to top of shoe
skirt length:	measure from bottom of waistband

SPECIAL SIZES require these measurements

jumpers:	bust/ waist/ hip/ skirt length/ waist length
skirts/skorts:	waist/ hip/ skirt length
pants:	waist/ hip/ inseam
walk shorts:	waist/ hip/ walk short length

